

Multiple Sewershed Package 12 - CIPP

M. Antonio Leyva, P.E.

Manager – Engineering

Carmen C. Groth, P.E.

Project Engineer

Marisol V. Robles

SMWVB Program Manager

Stella Manzello

Contract Administrator

Elaiza Alvarez, P.E.

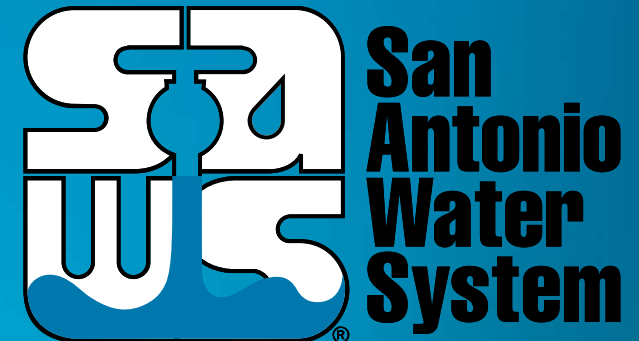
Project Engineer of Record

Carl Bain, P.E.

Project Engineer of Record

Ernest Maestas, P.E.

Engineer of Record



Non-Mandatory Pre-Bid Meeting

March 30, 2020

MAKING SAN ANTONIO
WATERFUL

Oral Statements

Oral statements or discussion during the pre-bid meeting today will not be binding, nor will it change or affect the terms or conditions within the Plans and Specifications of this Project. Changes, if any, will be addressed in writing only via an Addendum.

Multiple Sewershed Package 12 - CIPP



Agenda

- General Information
- Small, Minority, Women, and Veteran-Owned Business (SMWVVB Requirements)
- IFB Schedule
- Bid Packet Preparation
- Contract Requirements
- Vendor Registration
- Key Reminders
- Technical Information

Multiple Sewershed Package 12 - CIPP



General Information

- This is a Non-Mandatory pre-bid meeting.
- This presentation will be posted to the SAWS website.
- The construction estimate is \$432,330.
- Construction services being procured through IFB.
- Completion is scheduled for 150 calendar days.

Multiple Sewershed Package 12 - CIPP



Aspirational SMWB Goal

Industry	Aspirational SMWB Goal
Construction	20%

The aspirational SMWB goal is 20% of your total bid price.

Accepted SMWVB Certification Agency

- **South Central Texas Regional Certification Agency**
 - MBE, WBE, SBE (Includes “HUB” Program)

Minimum Qualifications for SMWVB recognition:

- **SBE-Certified** (even MBEs and WBEs)
- **Local office or local equipment yard**

Multiple Sewershed Package 12 - CIPP

Good Faith Effort Plan (GFEP) FAQs

- **Q: Is the 20% SMWB goal mandatory?**

A: No, but we ask prime contractors to do their best with good faith outreach efforts. If the goal is not met, proof of outreach efforts is required with the submittal.

- **Q: What if I am having trouble finding SMWB subcontractors?**

A: Please email the SMWVB Program Manager with the scopes of work you are seeking. You will receive lists of local SMWVB-certified firms to contact.

- **Q: What if my business is SMWB-certified? Do I need to find SMWB subs?**

A: If your firm is SMWVB-certified, you will most likely meet the goal. However, the GFEP is a required document, and a good faith outreach effort is still necessary.

- **Q: Do I need to include all my subcontractors in the GFEP or just those that qualify towards the SMWB goal?**

A: All subcontractors need to be included in the GFEP, even those that may not count towards the SMWB goal.

- **Q: What if I have questions about the GFEP?**

A: Please contact the SMWVB Program Manager at 210-233-3420, or at Marisol.Robles@saws.org. GFEP questions can be asked at any time before the submittal is due.

Post Award: Subcontractor Payment & Utilization Reporting (S.P.U.R.) System

1. Subcontractor & Supplier Payment Tracking
2. Subcontractor and Supplier Additions or Substitutions
3. LCP Tracker
4. Must be Current and Accurate before Retainage is released

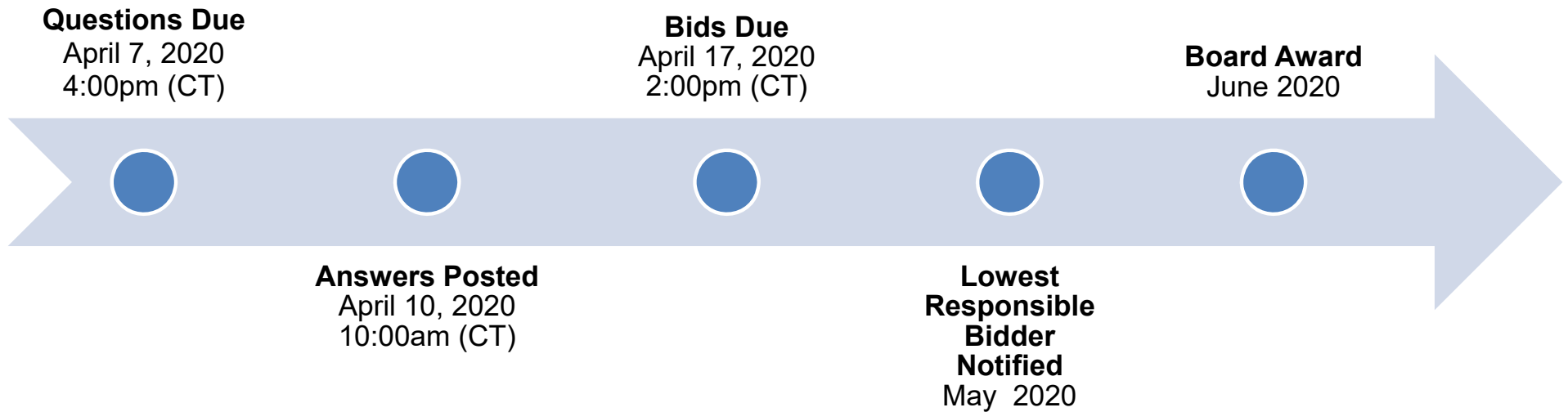
<https://saws.smwbe.com>



Multiple Sewershed Package 12 - CIPP



IFB Schedule



Multiple Sewershed Package 12 - CIPP



Bid Packet Preparation

- Utilize the Bid Packet Checklist within the specifications
- Double check all mathematical calculations and verify all extensions
- Addendums are now acknowledged on the Bid Proposals
- Ensure Mob and Prep of ROW do not exceed the percentage
- References and contact information must be verified prior to submitting bid(s)

Multiple Sewershed Package 12 - CIPP



Contract Requirements

Prevailing Wage Rate and Labor Standards – Section 2.10 of the General Conditions

- Certified payroll to be submitted on weekly basis
- Wage decisions are included within the specifications
- Contractors to utilize LCP Tracker
- Site visits are random and unannounced
- Interviews will be Conducted and will be private & confidential
- Payroll records are subject to review
- All apprenticeship programs will need to be approved by Department of Labor prior to starting
- Contractors are responsible for sub-contractor payroll
- Late payrolls delay contractor payments from SAWS

Contract Requirements

- Insurance requirements are found in Section 5.7 of the GCs
 - Builder's Risk is replaced by Installation Floater coverage (see Supplemental Conditions)
 - Maintain insurance coverage during the construction of this Project
- Compliant prior to executing the contract
- Will ask for insurance prior to Board award to expedite execution of the contract
 - Any deficiencies must be corrected prior to Board award

Contract Solicitations Website – Recent Changes

- To locate the Contract Solicitations website choose Resources

The screenshot shows the San Antonio Water System website header. The navigation menu includes 'About SAWS', 'Resources' (circled in red), and 'Work With Us'. A search bar is present with the text 'What can we help you find?'. Below the header, there is a 'Business Center' section with a blue background and white text. A red arrow points from the 'Contract Solicitations' option in the dropdown menu to the 'Business Center' section.

- At the drop down menu choose Contract Solicitations.

Contract Solicitations Website – Recent Changes

- Choose the specific project
- The following buttons are now located under the advertisement:
 - Notify Me
 - Plan Holder’s List
 - Downloads
 - Plans
 - Specs
 - Addendums
 - Geotechnical Report



The screenshot displays a website interface for a project advertisement. At the top, there are three main sections: 'Non-Mandatory Pre-Bid Meeting', 'Notify Me', and 'Plan Holders List'. The 'Non-Mandatory Pre-Bid Meeting' section includes a calendar icon with the number 31, the text '10:00 AM, Tuesday Aug. 6, 2019', and the address 'San Antonio Water System Customer Service Building, 2800 U.S. Hwy 281 N, San Antonio, Texas 78212; Conference Room CR-C145'. Below this is a blue 'Subscribe' button. The 'Notify Me' section features a megaphone icon and the text 'Receive updates sent straight to your inbox.' with a blue 'Subscribe' button. The 'Plan Holders List' section has an icon of three people and the text 'View plan holders list.' with a blue 'View List' button. Below these sections is a 'Downloads' section with two entries: 'Specifications' and 'Plans', both dated 'Jul. 31, 2019'. Each entry includes a note: 'Note: You must be logged in to access this document.' and a PDF icon.

Vendor Registration & Notification (VRN)

- Please register through SAWS Vendor Registration Program on the SAWS website at www.saws.org to ensure access to the latest information.
- To receive updates on specific projects, registered vendors must 'Subscribe' to the project by selecting the project, and clicking 'Subscribe' under the Notify Me box.

https://apps.saws.org/Business_Center/Contractsol/



Notify Me

Receive updates sent straight to your inbox.



Subscribe

Multiple Sewershed Package 12 - CIPP



Key Reminders

- All questions should be sent in writing to the corresponding Contract Administrator by email or fax.
- Please identify the project by its associated solicitation number.
- Contractors should not contact the SAWWS project engineer, the consultants for this project, or any other SAWWS staff up until Board award.
- Late bids will not be accepted, and will be returned unopened.
- If mailing bids, ensure that sufficient time is allowed for the package to reach SAWWS.
- If bids will be delivered in person to SAWWS, Respondents should allow sufficient travel time, as well as time to check in at the guard station.

Contact Information

<u>Contact Name</u>	<u>Title</u>	<u>Telephone Number</u>	<u>Email address</u>
Stella Manzello	Contract Administrator	210-233-3845	Stella.Manzello@saws.org
Marisol V. Robles	SMWVB Program Manager	210-233-3420	Marisol.Robles@saws.org

Multiple Sewershed Package 12 - CIPP



Contract Background

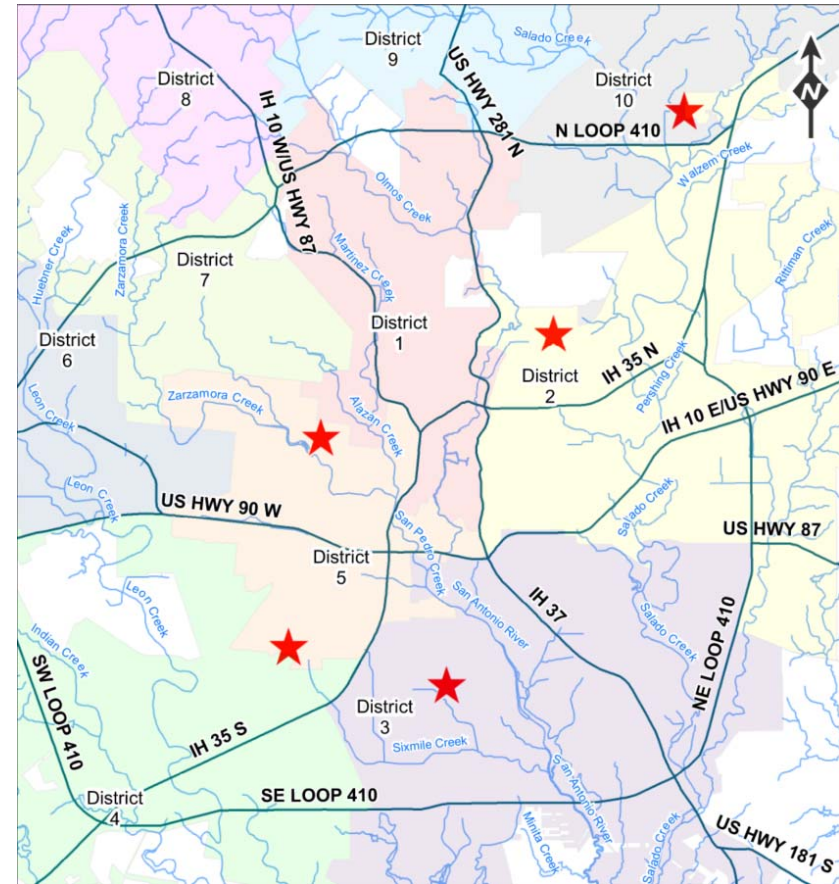
- Sealed bids are requested by the San Antonio Water System for the construction of approximately 1,692 feet of 8-inch to 12-inch existing sanitary sewer main via cured in place pipe and will rehabilitate or replace associated manholes.
- Project Fund will finance this expenditure included in the CY 2020.
- Project is part of the Consent Decree.
- Contractor is to become familiar with the plans, specifications, and project locations.

Multiple Sewershed Package 12 - CIPP



Project Location Map

- Perrin Beitel at Sun Gate
- Old Austin Rd.
- W Southcross Blvd and New Laredo Hwy
- S Flores St and Pleasanton Rd
- N Picoso and N Hamilton Ave.



LEGEND
 ★ Project Locations

Multiple Sewershed Package 12 - CIPP



Contract Background

Special Conditions

- Contractor to submit a completion report when the project is complete
 - Pre and post MPEG-I video and video logs
 - Any tests and/or submittals specified in the Contract Documents
- Payment
 - The unit price cost for items shall include all the necessary incidental work as subsidiary to the item unless otherwise specifically called out in the plans or approved by SAWS

Multiple Sewershed Package 12 - CIPP



Contract Requirements

Supplemental Conditions

- Worksite
 - No excavation work of any kind may begin until authorized by SAWS
 - Preliminary work such as televising, utility investigation/potholing, setup and testing of bypass pumping may not begin until approval in writing by SAWS
- Consent Decree Notice Provisions
 - Retention of documents
 - Notification of events that may cause delay
 - Liability for stipulated penalties

Multiple Sewershed Package 12 - CIPP

Contract Requirements

Supplemental Conditions

- Contractor shall perform the Work with its own organization on at least 40% of the total original contract price.
- Liquidated damages will be assessed as follows for final completion extending beyond contract time of all Project Phases:

Liquidated Damages Charges		
Category	Duration (days)	Charge (\$) per day
Tier 1	1-7	\$460.00
Tier 2	8-14	\$540.00
Tier 3	15-21	\$600.00
Tier 4	22-28	\$640.00
Tier 5	29-35	\$670.00
Tier 6	36-42	\$690.00

- Any days tallied after 42 days will be assessed as a Tier 6 rate.

Project Requirements

- Contractor to refer to the detailed asset information (table below) to prepare, submit and maintain a detailed construction baseline schedule, showing sequence of work, to clearly identify the project location construction activities.

Location No.	Project Location	Segment(s)/COMPKEYS	Permit(s)
1	AM45 (Perrin Beitel)	999338	TxDOT ROW
2	AY40 (Old Austin Rd)	976999	CoSA Tree Right-of -Entry
3	BP30 (Southcross Blvd/New Laredo Hwy)	973088	CoSA Tree Right-of -Entry TxDOT ROW
4*	8-inch S. Flores St. & Pleasanton Rd.	990611, 992600	CoSA Street Repair TxDOT ROW
5*	N. Picoso to N. Hamilton Ave	3107661	CoSA Right-of-Way

- Project locations 4 and 5 are urgent assets. Contractor shall complete rehabilitation on asset 5, within 60 calendar days upon receipt of NTP.

Project Requirements (contd.)

- Final completion of the project, including all project locations, except those identified as urgent assets, shall be achieved in **150** calendar days from the start date noted on the Notice to Proceed.
- After substantial completion has been reached for a “Project Location”, final completion must be achieved within 30 calendar days.
- Final completion is declared when the final punch list is approved by SAWVS, all infrastructure is in the ground, and final pavement and surface restoration is completed. Final completion includes the removal of all bypass pumping equipment.
- Contractor shall not work on more than 2 project locations concurrently without prior written approval from SAWVS Inspections.

Multiple Sewershed Package 12 - CIPP

Project Requirements (contd.)

- Contractor shall not commence any work until applicable permits are obtained.
- SAWS will obtain Utility Installation Request/Right-of-Way (ROW) permits from TxDOT in accordance with the project contract documents.
- SAWS has obtained applicable CoSA Tree Permit(s) from City of San Antonio.
- The Contractor will not commence construction activities at any location pending ROE and shall plan accordingly and include these project locations last within Contractor's approved schedule.
- The Contractor shall carefully review ROE documents and shall closely coordinate with landowners and their tenants, prior coordination and approval by SAWS.
- Certain properties with Right-of-Entry areas have schedule limitations that are different than the overall contract duration.

Project Requirements (contd.)

- Contractor shall consider equipment that can access through very narrow pathways/alleys, for example in project location AY40.
- Contractor shall coordinate with landowners and their tenants for activities within the easement (Project Locations 2, 3 and 4).
- If any excavation occurs inside private property, due to point repairs, Contractor shall coordinate with property owners and provide protection to existing structures, fencing, trees, landscaping, etc.

Multiple Sewershed Package 12 - CIPP



Project Locations

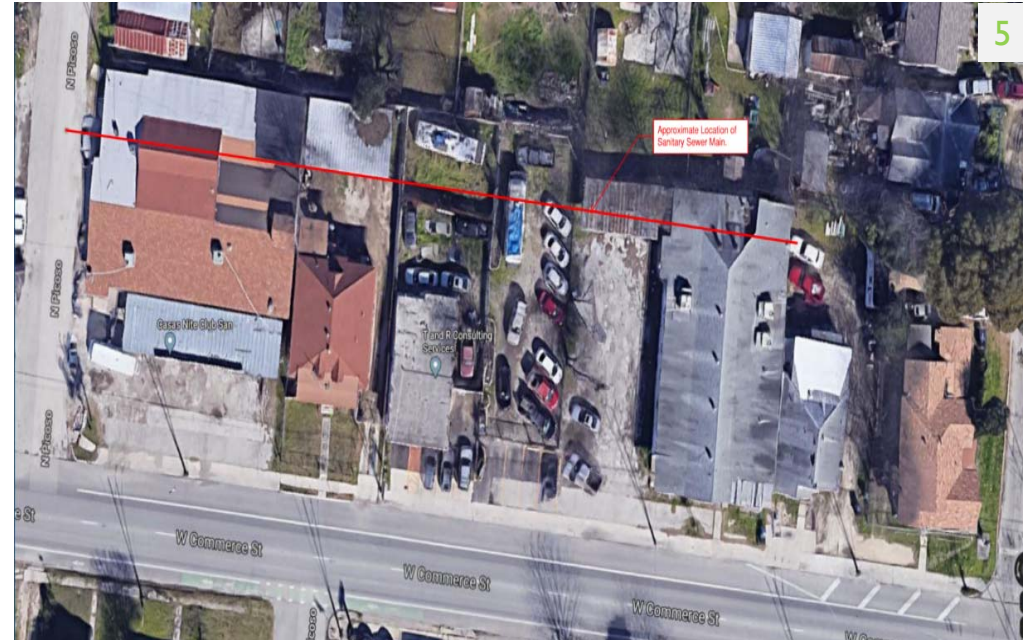


- 1. AM45
- 2. AY40
- 3. BP30

Multiple Sewershed Package 12 - CIPP

Project Locations

- 4. Flores St and Probandt Rd.
- 5. N Picoso to N Hamilton Ave.



Multiple Sewershed Package 12 - CIPP



QUESTIONS?

Reminder: Oral statements or discussion during the pre-bid meeting today will not be binding, nor will it change or affect the terms or conditions within the Plans and Specifications of this Project. Changes, if any, will be addressed in writing only via an Addendum.

Multiple Sewershed Package 12 - CIPP



Multiple Sewershed Package 12 - CIPP

M. Antonio Leyva, P.E.

Manager – Engineering

Carmen C. Groth, P.E.

Project Engineer

Marisol V. Robles

SMWVB Program Manager

Stella Manzello

Contract Administrator

Elaiza Alvarez, P.E.

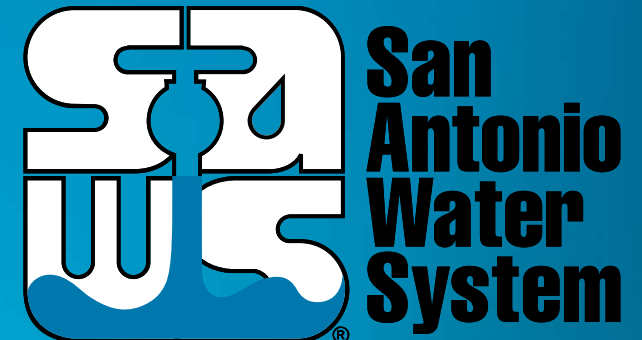
Project Engineer of Record

Carl Bain, P.E.

Project Engineer of Record

Ernest Maestas, P.E.

Engineer of Record



Non-Mandatory Pre-Bid Meeting

March 30, 2020

MAKING SAN ANTONIO
WATERFUL

